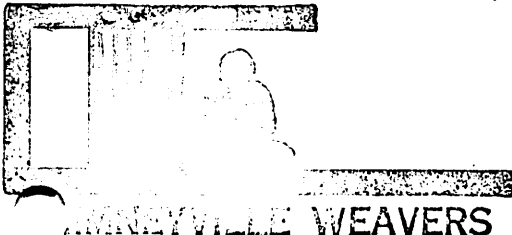


P.O. Box 13494  
Jackson, MS 39236-3494



MAY 1987 NEWSLETTER

CALENDAR:

MAY MEETING

Date: Saturday, May 16

Time: Meeting 9:00, with workshop to follow. Will last until 4 or 5:00. Bring a bag lunch.

Place: Crafts Center on Natchez Trace

Program: Painted Warp, Ikat Dyeing, and Embellished Warp by Kim Whitt

June 7 : 1:00- 5:00, Children's Craft Sampler at Trace

APRIL 18 MEETING

Ten members were present at the meeting at the Municipal Art Gallery. Gerry Reiff, Treasurer, reported a balance of \$566,70. We discussed the arrangements for the workshop in May and Sandi Tucker said she would mail out additional information to those registered when she received it. You should have this by now, but if not, it is being reprinted in this newsletter.

Shelly Leichter asked for volunteers to help at the Children's Craft Sampler June 7. We do receive an honorarium for taking part in this event. Additional info later in newsletter.

Also presented was a request for us to participate in JubileeJam, a Jackson Arts and Music Festival on May 2 and 3. Because of the closeness of the date of the festival and the amount of time involved the Guild voted not to take part.

Amy Evans, HGA rep, reminded us of Convergence in July '88 and said that there is more information in the current S, S & D.

After the business meeting Virginia Trainor presented a program on Bound Rosepath and showed us some of her samplers.

I am enclosing a copy of the handout to those that were present. If I miss you or you weren't there and want one, call me.

\*\*\*\*\*

FOR SALE:

Margie Kemp of Ruston, Louisiana has a 4 H, 24" "Cambridge-type" loom, direct tie-up, an antique. Phone # 318-255-8800. Best offer.

NOTES FROM THE DIRECTOR:

Enclosed in this newsletter are the supplies and instructions for the PAINTED WARP WORKSHOP. The workshop will be the third Saturday in May, our regular meeting date. The deadline for submitting your application (in the last newsletter) was May 1. If you have neglected to send this in on time, please do so as soon as possible so that Kim will know how many to prepare for. Send your application and a check for \$10.00 made out to Kim Carson-Whitt directly to Sandi Tucker at 2106 Wildwood Terr. Yazoo City, Ms. 39194.

Sunday June 7, 1987 from 1-5 pm is the Children's Craft Sampler at the Craft Center on the Natchez Trace. We need volunteers to help out. We will be teaching children to do meat-tray weaving and all of the supplies will be provided. Please call Shelly at 982-3078 if you can help out part or all of that afternoon.

My big news is that I will be moving to Phoenix, Arizona this summer. I won't be leaving until July and hope to see everyone at either the May Workshop or the June Crafts Sampler. Phoenix has three weaving guilds in the metropolitan area, so I'm planning on getting involved as soon as I get settled. I am sure I will be leaving this guild in the capable hands of Sandi, Marsha, and Gerry, but I know they would be glad to have the support and co-operation of every member of the CWG for the rest of this year.

SHELLY LEICHTER, DIRECTOR

I can't believe that May will be our last meeting until September; the year has gone by so fast. We probably will not be putting out a newsletter until fall unless we have important information to disperse, but be sure to send me anything you want to include in September's newsletter, Hope to see everybody in th fall! Except for Shelly, that is, and that brings us to the last item. We're sad to see Shelly go, but excited for her about her new job too. She's worked hard for the Guild and we appreciate all she's done. Thanks Shelly; we will miss you!

MARSHA HARRIS, SECRETARY

# PAINTED WARP, IKAT DYEING, & EMBELLISHED WARP WORKSHOP

Kim Whitt

## Description:

Painted warp techniques will be emphasized with discussions and demonstrations of silk-screening warps, ikat resist tying, and unconventional warp embellishments.

## Supplies needed:

Scissors  
Small lidded jars for dyes (3-4)  
Small brushed or household sponges cut to fit into jars  
(used for painting the warp)  
Two strong pipes or dowels sturdy enough to support the  
tension of your warp, about 18" long  
Cord, string, or strong yarn  
Couple of yardsticks or lease sticks  
Plastic strips 1" wide cut from garbage bags  
Rubber gloves and dye clothes  
Large C clamps  
Garbage bags (3)  
Scoured and washed warp\*\*

## \*\*Warp Preparation:

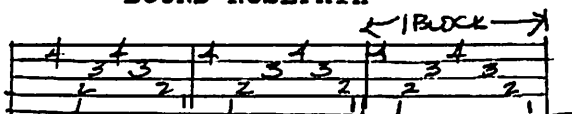
1. Use cotton, linen, silk, rayon or a combination of these for your warp.
2. Depending on size of yarn and desired weight of fabric, sett for 50/50 weave or predominantly warp-faced weave.
3. Belts or neck scarves make good projects so set for 6-15" wide and about 3-4 yards long. Size and sett of your project depends on what you feel comfortable with.
4. Twine off every inch or two of warp while it is still on the warping board, at the cross and at the bottom. For warps longer than 3 yards, twine in the middle, too.
5. Tie the loop ends of the warp so that a 1" pipe can be inserted.
6. Remove the warp and DON'T cut the ends.
7. Scour (wash) the warp in hot, soapy water. Rinse well and soak in washing soda (soda ash) and hot water for 20 minutes [1/2 cup to a tub (3 gals.)] Don't rinse, but wring out excess.

THE ABOVE STEP CAN BE DONE AT THE WORKSHOP, BUT DO WASH YOUR WARP AND RINSE WELL BEFOREHAND.

8. After removing excess water, spread warp under tension over a table or between two trees using 1" pipe or dowels through the end loops of the warp. Distribute the warp evenly.

## BOUND ROSEPATH

THREADING:

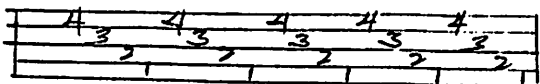


TIEUP:



(jack loom)

TREADLING:



WARP: Linen or cotton but on the thin side.

SET: Determined by your weft. Select yarns that are soft enough to cover well.

Bound Rosepath is associated with Swedish weaving. In Norway a similar type of weaving is known as Krokbragd.

Bound Rosepath may be done on either three or four harnesses. It can be done on more harnesses but the more harnesses the looser the weave. It is usually done in 2 to 3 colors. One may use up to three colors with three harnesses and up to four colors with four harnesses in a one block repeat.

If yarns tend to slip on the warp tabby can be inserted between the Rosepath but the weave then is not really bound Rosepath but pointed twill on a tabby background. However tabby between strengthens the weave.

When using several colors be sure to twist the yarns at end of the rows.

SAMPLE PATTERNS:

A = GREEN  
B = BEIGE  
C = RED

	4	3	2	1	
A	B	B	A	4R	
C	B	A	A	3R	
C	A	A	B	2R	
A	A	C	C	4R	

*Repeat in reverse order*

	4	3	2	1	
A	B	B	B	5R	
A	B	B	A	5R	

*Repeat in reverse order*

(Little People)

MALE

	AAAA	8
Feet	BAAA	2
	BBAA	2
	BBBA	4
	BBCC	12
Pants	DBDD	8
	DBBB	2
Coat	DBBD	2
	CBBC	1
	EBBC	2
Face	EBBE	2
	Red mouth.	
	EBBE	4
	EBEF	1
	EBEE	2
Hair	EBCE	3
	CBCC	2
	CBBC	2
	CBBB	2
	AAAA	8
	<u>4 3 2 1</u>	

A = OLIVE  
 B = LT. GREEN  
 C = PURPLE  
 D = OFF WHITE  
 E = PINK  
 F = BLUE

FEMALE

	AAAA	8
	BAAA	2
	BBAA	2
	BBBA	4
	BCCC	4
	(pick in center skirt)	
	CBCC	5
	(pick in center skirt)	
	CBBC	5
Neck	DBBE	2
	DBDD	5
Chin	EBBB	3
	DBBE	2
Face	BBEE	1
	EBCE	1 (Pick in red mouth)
Hair	EBCE	2
	CBCC	3
	CBBB	1
	AAAA	8
	<u>4 3 2 1</u>	

A = OLIVE  
 B = LT. GREEN  
 C = LAVENDER  
 D = PURPLE  
 E = PINK  
 F = BLUE

Harris  
141 Hebron Hills Drive  
Brandon, MS 39042



MARCY PETRINI  
950 FAIRFAX CIRCLE  
JACKSON, MS 39211